

Aroma

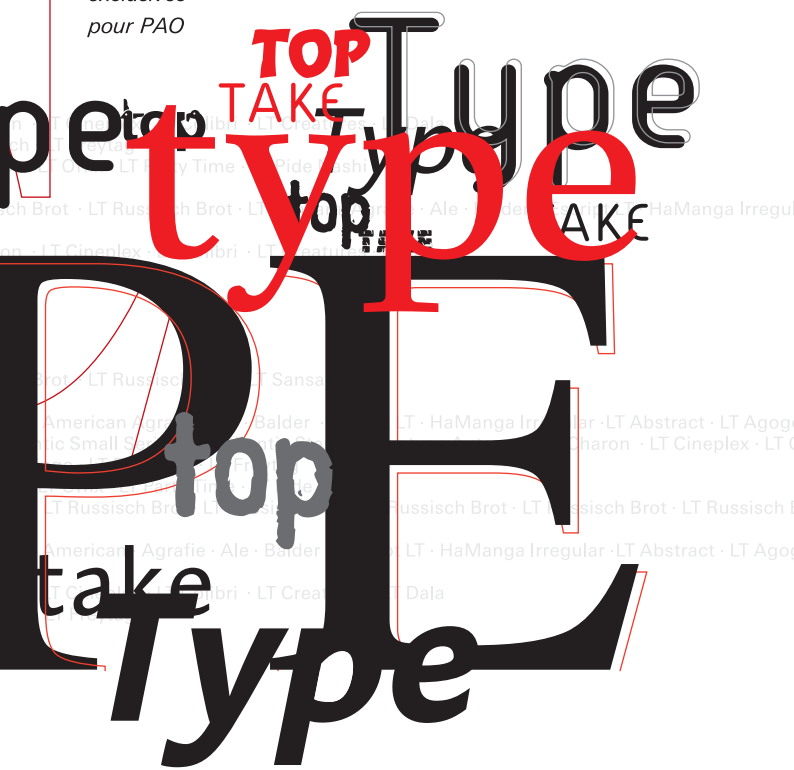
tpen
Kaliber
ide Nashi

Top TakeType
The best of TakeType

**130 exclusive
typefaces for
electronic
publishing**

130 Exklusiv-
Schriften für
elektronisches
Publizieren

*130 polices
de caractères
exclusives
pour PAO*



· LT Feltpen · LT Festtagsfont · LT Finerliner · LT Flamingo · LT Franosch

ffix · LT Party Time · LT Pide Nashi

ot · LT Russisch Brot

· LT Scott · LT Seven · LT SinahSans

· LT Space Balls · LT Spacera · LT Startec · LT Sunburst · LT Truckz

· LT Creatures · LT Dala

· LT Feltpen · LT Festtagsfont · LT Finerliner · LT Flamingo · LT Franosch · LT Freytag

kt · LT Puritas

ot · LT Russisch Brot

iber · LT Lichtwerk · LT Maenneken

kt · LT Puritas

LT Agogo

abcdefghijklmnopqrsuwxyzABCDEFKLMORXZ43

LT Cineplex Regular

abcdefghijklmnopqrsuwxyzAEGHKMORSYU268

LT Really Medium

abcdefghijklmnopqrsuwxyzACEMORSUVX24

LT Abstract	LT Festtagsfont	LT Rezydent
LT Agogo	LT Finerliner	LT Rory
Agrafie	LT Flamingo	LT Rough
Ale Transport	LT Franosch	LT Rowena
LT Animalia	LT Freytag	LT Russisch Brot
LT Aroma	LT Gaius	LT Sansara
LT Astrolo	HaManga Irregular	LT Scott
LT Atlantis	LT Inagur	LT Seven
LT Atomic	LT Kaliber	LT SinahSans
LT Authentic Sans	LT Lichtwerk	LT Sketch
LT Authentic Serif	LT Maenneken	LT Smileface
LT Authentic	LT Mailbox	LT Space Balls
Small Serif	Mateo	LT Spacera
LT Authentic Stencil	LT Method	LT Startec
Linotype Automat	Modified Gothic	LT Sunburst
Balder	LT Notec	LT Truckz
LT Charon	LT Offix	LT Typo American
LT Cineplex	LT Party Time	LT Zigibacks
LT Colibri	LT Pide Nashi	
LT Creatures	LT Pine	
LT Dala	LT Projekt	
LT Down Town	LT Punkt	
LT Dropink	LT Puritas	
Esript LT	ReadMyHand	
LT Feltpen	LT Really	

Welcome to the TakeType Library

Top TakeType is a round up of the most successful typefaces from the highly valued TakeType Library.

Recent type design tools have opened up more possibilities for creative, experimental designers to develop new and previously unimaginable typefaces. These designs reflect the spirit of the past few years.

Whether text, display, experimental, or symbol typefaces, let each one of the 130 Top TakeType typefaces inspire your work, and expand your creative potential.

All of the Top TakeType typefaces are available for the Macintosh as PostScript fonts, and for Windows PCs in either PostScript or TrueType format.

The typefaces are licensed for five workstations.

The complete TakeType Library contains over 750 typefaces.

Willkommen zur TakeType Library

Top TakeType ist eine Zusammenstellung der erfolgreichsten Schriften aus der beliebten TakeType Library.

Neue Werkzeuge im Schriftdesign öffneten experimentierfreudigen und kreativen Designern den Weg zur Gestaltung von neuen und unverbrauchten Schriften. Darin spiegelt sich der Zeitgeist der letzten Jahre.

Gleich ob es sich um Text, Display, experimentelle Schriften oder um Symbole handelt, lassen Sie sich von den 130 Top TakeType-Schriften bei Ihren Arbeiten zu neuem inspirieren und erweitern Sie Ihr gestalterisches Kreativitätspotenzial.

Alle Schriften der Top TakeType-Auswahl liegen für den Macintosh im PostScript und für den PC/Windows im PostScript- und TrueType-Format vor.

Die Schriften sind für fünf Arbeitsplätze lizenziert.

Die gesamte TakeType Library besteht aus über 750 Schriften.

Bienvenue à la typothèque TakeType

Top TakeType regroupe les polices couronnées de succès de la TakeType Library des plus appréciée.

Les nouveaux outils de conception ouvrent la voie à la conception de polices innovatrices aux concepteurs créatifs et imaginatifs. Ces nouvelles polices reflètent l'esprit du temps des dernières années.

Quelle que soit la catégorie, texte, écran, polices expérimentales ou symboles, emprunter de nouvelles voies dans le domaine de la création et laissez-vous inspirer par les 130 polices Top TakeType.

Toutes les polices de la sélection Top TakeType sont disponibles pour le Macintosh en format PostScript et pour PC/Windows en formats PostScript et TrueType.

Une licence pour les polices est accordée pour cinq postes de travail.

La TakeType Library vous propose au total plus de 750 polices.

Aroma
Authentic Stencil
Animalia

Balder

ABDEGHKNORSTWXZ578

LT Animalia

adgnstELORRX129Q

LT Aroma Bold Italic

adefgmprsABFGNRWX136

Linotype Authentic™ Serif

Karin Huschka, 1999

Regular **abcdefghijklmnopABCDEGJKMNOP123**

Linotype Authentic™ Stencil

Karin Huschka, 1999

Regular **abcdefghijklmnopABCDEGJKMNOP123**

Linotype Authentic™ Sans

Karin Huschka, 1999

Regular **abcdefghijklmnopABCDEGJKMNOP123**

Linotype Authentic™ Small Serif

Karin Huschka, 1999

Regular **abcdefghijklmnopABCDEGJKMNOP123**

Linotype Automat™

Frank Marciuliano, 1997

Regular **abcdefghijklmnoprstuvwxyz&ABCDEFGHIJKLMN.OPQRSTUVWXYZ123560**

Regular Alternate **abcdefghijklmnoprstuvwxyz&ABCDEFGHIJKLMN.OPQRSTUVWXYZ123560**

Balder™

Lutz Baar, 1994

ABCDEFGHIJKLNOPRABCDEFGHIJKMNOPQ1235

Linotype Charon™

Renate Weise, 1999

Regular **abcdefghijklmnopABCDEGJKMNOP123**

Semibold **abcdefghijklmnopABCDEGJKMNOP1235**

Linotype Cineplex™

Dario Muhafara, 2002

Light **abcdefghijklmnoprstuvwABCDEGJKMNOPQR123**

Regular **abcdefghijklmnoprstuvwABCDEGJKMNOPQR123**

Regular SC **ABCDEFGHIJKLNOPRSTUVABCDEFGHIJKMNOPQR123**

Italic **abcdefghijklmnoprstuvwABCDEGJKMNOPQR123**

Bold **abcdefghijklmnoprstuvwABCDEGJKMNOPQ123**

Bold Italic **abcdefghijklmnoprstuvwABCDEGJKMNOPQR123**

Linotype Colibri™

Hans-Jürgen Ellenberger, 1999

Regular **abcdefghijklmnoprstuABCDEFGHIJKMNOPQ1235**

F. R. A. N. S. S.

D. O. R. E.

Finelinen Macro

Freitag Regel

MEDIUM

Secret

ar

LT Fineliner Macro

abcdefghijklmnoprtvz ABEGHIKMOSY258

LT Dala Pict



LT Dala Text

acdefnoprz AGKMNSTWXY13

LT Dropink

AÆFLORS BGTMTWX28e

LT Franosch Medium

ACEGNOPTURZ7X%

LT Freytag Regular

abcdefghijklmnopqrstvwxyz ADGNOQRTWX128&

Linotype Creatures™

Martina Theisen, 2002



Linotype Dala™

Bo Berndal, 1999

Text abcdefghijklmnopqrstuvwxyz ABCDEFGJKMNOPQR51235

Pict

Linotype Down Town™

Critzler, 1997

abcdefghijklmnopqrstuvw ABCDEFGJKMNOPQR123

Linotype Dropink™

Christine Voigts, 1999

ABCDEFGHIJKLMN OPQRS ABCDEFGJKM1235

Esript™ LT

Hans-Jürgen Ellenberger, 2003

Regular abcdefghijklmnoprst ABCDEGJKMNOPQR123

Italic *abcdefghijklmnopqrst ABCDEGJKMNOPQR123*

Bold **abcdefghijklmnoprst ABCDEGJKMNOPQR123**

Bold Italic ***abcdefghijklmnoprst ABCDEGJKMNOPQRS123***

Linotype Feltpen™

Lutz Baar, 1997

Regular abcdefghijklmnoprstuv ABCDEGJKMNOPQRSTUVWXYZ

Medium *abcdefghijklmnoprstuv ABCDEGJKMNOPQRSTUVWXYZ*

Linotype Festtagsfont™

Sine Bergmann, 1999



Linotype Finerliner™

Gary Munch, 1997

Micro *abcdefghijklmnopxyz& ABCDEGJKMNOPQRSTUVWXYZ123560*

Macro *abcdefghijklmnopxyz& ABCDEGJKMNOPQRSTUVWXYZ123560*




Linotype Flamingo™

Michael Leonhard, 1999

abcdefghijklmnopqr stuvwxyz ABCDEFGJKMNOPQRSTUVWXYZ123560

Linotype Franosch™

Max Franosch, 2002

Light  ABCDEF·GHIJKABCDEF·GJKMI23
Medium  ABCDEF·GHIJKABCDEF·GJKMI23
Bold  ABCDEF·GHIJKABCDEF·GJKMI23

Linotype Freytag™

Arne Freytag, 2002

Regular abcdefghijklmnopqrstuvwxyz&ABCDEFGHIJKLMNopqrstuvwxyz123560

Linotype Gaius™

Julius de Goede, 2002

Regular *abcdefghijklmnopqrstuvwxyzABCDEFGHIJKLMNopQRS123*
Bold *abcdefghijklmnopqrstuvwxyzABCDEFGHIJKLMNopQRS1235*

HaManga Irregular™

Alessio Leonardi, 1994

Pictures 

Linotype Inagur™

Hans-Jürgen Ellenberger, 1999

Light abcdefghijklmnoprstuvABCDEGJKMNOPQRS123
Light Italic *abcdefghijklmnopqrstuABCDEGJKMNOPQRS123*
Regular abcdefghijklmnoprstuABCDEGJKMNOPQRS123
Italic *abcdefghijklmnopqrstABCDEGJKMNOPQRS123*
Bold **abcdefghijklmnopqrstABCDEGJKMNOPQR123**
Bold Italic ***abcdefghijklmnopqrstABCDEGJKMNOPQ1235***

Linotype Kaliber™

Lutz Baar, 1999

Regular abcdefghijklmnoprstuABCDEGJKMNOPQRSTUI23
Regular Italic *abcdefghijklmnopqrstuABCDEGJKMNOPQRSTUI23*

Linotype Lichtwerk™

Bernd Pfannkuchen, 1999

Bold obcdefghijklmnopqrstuvwxyz&ABCDEFGHIJhMNOpqrstuvwxyzWXYz123560

Linotype Maenneken™

Martina Theisen, 2002

Outline 



Really Demi Bold

m @ v l b a x

LT Projekt

abceghijkABKRSW123

LT Mailbox Heavy

@ @ @ @ j k r s t v z 1 4 8

LT Pide Nashi One

a d e f g j n o r s t u v w x y z 1 4 8

LT Punkt Bold

acdefghjknopr suwxz148

LT Really Demi Bold

adefgjnr szAFMORPQV348

LT Rory Oblique

adefg jknrvz ABELMQSX479

Projekt Regular

Rocky Oblique
h e a v y

oshi

Linotype Mailbox™

Andreas Karl, 1997

Heavy @#%&'()*+,-./:;<=>?@A B C D E F G H I J K L M N O P Q R S T U V W X Y Z

Mateo™

Hans-Jürgen Ellenberger, 1994

Bold abcdefghijklmnopqrstuvwxyz ABCDEFGHIJKLMNOPQRSTUVWXYZ

Bold Outline abcdefghijklmnopqrstuvwxyz ABCDEFGHIJKLMNOPQRSTUVWXYZ

Linotype Method™

Thomas Schnaebeler, 1997

Light abcdefghijklmnopqrstuvwxyz ABCDEFGHIJKLMNOPQRSTUVWXYZ123

Bold abcdefghijklmnopqrstuvwxyz ABCDEFGHIJKLMNOPQRSTUVWXYZ123

Modified Gothic™

Linotype Design Studio

ABCDEFGHIJKLMN OPQRSTUVWXYZABCDEFGHIJKLMN OPQRSTUVWXYZ

Linotype Notec™

Franciszek Otto, 1999

abcdefghijklmnopqrstu vwxyz ABCDEFGHIJKLMNOP123

Linotype Offix™

Hans-Jürgen Ellenberger, 1997

abcdefghijklmnopqrstuvwxyz ABCDEFGHIJKLMNOP123

Linotype Party Time™

Christo Velikov, 1997

Regular ABCDEFGHIJKLMNOPABCDEFGHIJKLMN OPQ123

Linotype Pide Nashi™

Verena Gerlach, 1997

One abcdefghijklmnopqrstuvwxyz ABCDEFGHIJKLM123

Linotype Pine™

Andrew Weed, 1994

Regular abcdefghijklABCDEFGHIJKLM123

Linotype Projekt™

Andreas Koch, 1999

Regular abcdefghijklmnopqrstuvwxyz ABCDEFGHIJKLMNOPQR123

Regular SC ABCDEFGHIJKLMNOPRSABCDEFGHIJKLMN OPQ123

Regular Italic *abcdefghijklmnopqrstuABCDEFGHIJKLMNOPQR123*

Linotype Punkt™

Mischa Leiner, 1999

Regular **abcdefghijklmnopqrstuABCDEFGHIJKLMNOPQR123**
Bold **abcdefghijklmnopqrstuABCDEFGHIJKLMNOPQR123**

Linotype Puritas™

G. S. Jacob, J. E. Meissner, 1999

Medium *abcdefghijklmnopqrstvwxyzABCDEFGHIJKLMNOPQRS123*
Medium Italic *abcdefghijklmnopqrstvwxyzABCDEFGHIJKLMNOPQRS123*
Bold **abcdefghijklmnopqrstvwxyzABCDEFGHIJKLMNOPQRS123**
Bold Italic **abcdefghijklmnopqrstvwxyzABCDEFGHIJKLMNOPQRS123**

ReadMyHand™

Leon Hulst, 1994

Regular *abcdefghijklmnopqrABCDEFGHIJKLMNOP123*
Bold **abcdefghijklmnopqrABCDEFGHIJKLMNO1235**

Linotype Really™

Gary Munch, 1999

Medium **abcdefghijklmnopqrstABCDEFGHIJKLMNOP123**
Medium Italic *abcdefghijklmnopqrstuABCDEFGHIJKLMNOPQR123*
Demi Bold **abcdefghijklmnopqrABCDEFGHIJKMNO123**
Demi Bold Italic **abcdefghijklmnopqrstABCDEFGHIJKLMNOP1235**

Linotype Rezydent™

Paul van der Laan, 1999

Two *abcdefghijklmnopqrstvwxyzABCDEFGHIJKLMNOPQRSTUVWXYZ123*
Three *abcdefghijklmnopqrstvwxyzABCDEFGHIJKLMNOPQRSTUVWXYZ123*

Linotype Rory™

Tad Biernot, 1997

Oblique **abcdefghijklmnopqrstuABCDEFGHIJKLMNOPQRST123**

Linotype Rough™

Christophe Badani, 1999

Light *abcdefghijklmnopqrstABCDEFGHIJKLMNOPQRS123*
Light Italic *abcdefghijklmnopqrstuABCDEFGHIJKLMNOPQR123*
Regular **abcdefghijklmnopqrABCDEFGHIJKLMNOPQ123**
Italic *abcdefghijklmnopqrstuABCDEFGHIJKLMNOPQ123*
Medium **abcdefghijklmnopqrABCDEFGHIJKLMNOPQ123**



SANS

Typo American

LT Rough Bold Italic

adefgjnswyACEKLMORZ48

LT Russisch Brot Eat Two

adefgostvxyzAKLMNOPRS35

LT Sansara

abcfghijklmnopqrstuvwxyz



LT
REGULAR
Rough Bold Italic

LT Space Balls



LT Spacera

aDEGKNORSVXZ378

LT Typo American

a defg jkm AEKNOPQRSTWXI23

Linotype Rough Continued / Fortsetzung / Suivante

Medium Italic *abcdefghijklmnopqrABCDEFJKLMNOPQR123*
 Bold **abcdefghijklmnopqrABCDEFJKLMNOPQR123**
 Bold Italic ***abcdefghijklmnopqrABCDEFJKLMNOPQR123***
 Outline **abcdefghijklmnopqrABCDEFJKLMNOPQR123**

Linotype Rowena™ Gustavs Andrejs Grinbergs, 1997

Light **abcdefghijklmnopqrstuvwxYZABCDEFJKLMNOPQRST123**
 Regular **abcdefghijklmnopqrstuvwxABCDEFJKLMNOPQRS123**
 Medium **abcdefghijklmnopqrstuvwxABCDEFJKLMNOPQR123**
 Bold **abcdefghijklmnopqrstuvABCDEFJKLMNOPQR123**
 Heavy **abcdefghijklmnopqrstuvABCDEFJKLMNOPQ123**
 Black **abcdefghijklmnoprstABCDEFJKLMNOP1235**

Linotype Russisch Brot™ Helmut Ness, Markus Remscheid, 1997

Eat Text **abcdefghijklmnoprstuvABCDEFJKLMNOPQRSTU123**
 Eat Regular **abcdefghijklmnoprstuvABCDEFJKLMNOPQRSTU123**
 Eat Mix **abcdefghijklmnoprstuvABCDEFJKLMNOPQRSTU123**
 Eat One **abcdefghijklmnoprstuvwxYZABCDEFJKLMNOPQRSTUWXYZ123**
 Eat Two **abcdefghijklmnoprstuvwxYZABCDEFJKLMNOPQRSTUWXYZ123**
 Eat Three **abcdefghijklmnoprstuvwxYZABCDEFJKLMNOPQRSTUWXYZ123**

Linotype Sansara™ Grégoire Poget, 1999

abcdefghijklmnopqrstuvwxyZABCDEFJKLMNOPQRSTU1235

Linotype Scott™ Hellmut G. Bomm, 1999

Venus **abcdefghijklmnoprsABCDEFJKLMNOPQRST123**

Linotype Seven™ Christian Vornehm, 1997

abcdefghijklmnopqrABCDEFJKLMNO123

Linotype SinahSans™ Peter Huschka, 2002

Regular **abcdefghijklmnopnǝBcDøGŮK1235**
 Bold **abcdefghijklmnopnǝBcDøGŮK1235**

Linotype Sketch™

Dieter Kurz, 1997

abcdefghijklmnopqrstvwxyzABCDEFGHIJKLMNQRSTUUVW123

Linotype Smileface™

Martina Theisen, 2002



Linotype Space Balls™

Urs Lehni, 1997



Linotype Spacera™

Louis Lemoine, 1996

Regular

A B C D E F G A B C D E G J I 2 3

Linotype Startec™

Jan Tomás, 1999

A B C D E F G H J K L N O A B C D E G J K M N O P Q 1 2 3

Linotype Sunburst™

Ed Bugg, 1997

East Regular *abcdefghijklmnopqrstvwxyz&ABCDEFGHIJKLMNPPQRSTUUVWXYZ123*

East Heavy *abcdefghijklmnopqrstvwxyzABCDEFGHIJKLMNPPQRSTUUV123*

Linotype Truckz™

Harry Thorwbory, 1997

A B C D E F G H J K L A B C D E G J K M N O 1 2 3

Linotype Typo American™

Mark Stanczyk, 1999

Ⓜ a b c d e f g h j k l n o A B C D E G J K M N O P I 2 3

Linotype Zigibacks™

Christo Velikov, 1997

One 
Two 

Trademarks

Linotype, Linotype Library, Linotype Univers, Agrafie, Ale, Balder, Escript, HaManga Irregular, Linotype Abstract, Linotype Agogo, Linotype Animalia, Linotype Aroma, Linotype Astrolo, Linotype Atlantis, Linotype Atomatic, Linotype Authentic, Linotype Automat, Linotype Charon, Linotype Cineplex, Linotype Colibri, Linotype Creatures, Linotype Dala, Linotype Down Town, Linotype Dropink, Linotype Feltpen, Linotype Festtagsfont, Linotype Finerliner, Linotype Flamingo, Linotype Franosch, Linotype Freytag, Linotype Gaius, Linotype Inagur, Linotype Kaliber, Linotype Lichtwerk, Linotype Maenneken, Linotype Mailbox, Linotype Method, Linotype Notec, Linotype Offix, Linotype Party Time, Linotype Pide Nashi, Linotype Pine, Linotype Projekt, Linotype Punkt, Linotype Puritas, Linotype Really, Linotype Rezident, Linotype Rory, Linotype Rough, Linotype Rowena, Linotype Russisch Brot, Linotype Sansara, Linotype Scott, Linotype Seven, Linotype SinahSans, Linotype Sketch, Linotype Smileface, Linotype Space Balls, Linotype Spacera, Linotype Startec, Linotype Sunburst, Linotype Truckz, Linotype Typo American, Linotype Zigibacks, Mateo, Modified Gothic and ReadMyHand are Trademarks of Heidelberger Druckmaschinen AG, which may be registered in certain jurisdictions, exclusively licensed through Linotype Library GmbH, a wholly owned subsidiary of Heidelberger Druckmaschinen AG.

Apple, Macintosh and TrueType are registered trademarks of Apple Computer Inc.

Adobe, Adobe Type Manager, ATM, Acrobat, Acrobat Reader and PostScript are trademarks of Adobe Systems Incorporated, which may be registered in certain jurisdictions.

Microsoft, Windows and OpenType are registered trademarks of Microsoft Corporation.

We reserve the right of errors and changes.

© 2004 Linotype Library GmbH, 61352 Bad Homburg, Germany.

The Linotype TakeType Library

The TakeType Library currently consists of four CDs containing a total of over 750 fonts.

The hybrid CDs are compatible with both, Mac and PC and contain fonts in PostScript or OpenType-format for Mac and PostScript- and/or TrueType- or OpenType formats for PC/Windows.

Die TakeType-Library besteht zur Zeit aus vier CDs mit über 750 Schriften.

Die Hybrid-CDs enthalten die Schriften für Macintosh im PostScript oder OpenType-Format und für PC/Windows im PostScript- und/oder TrueType-Format oder im OpenType-Format.

La typothèque TakeType comprend à l'heure actuelle quatre cédéroms avec plus de 750 polices.

Les cédéroms hybrides comprennent les polices pour Mac en format Post-Script ou et OpenType. Pour PC/Windows en format PostScript et/ou format TrueType ou et format OpenType.

TakeType 2.1



TakeType 3



TakeType 4



TakeType 5



ffie · Ale · Balder · Escript LT · HaManga Irregular · LT Astrac · · LT Agogo · LT Animalia · LT
strolo · LT Atlantis · LT Atomic · LT Authentic Sans
uthentic Serif · LT Authentic Small Serif · LT Authentic Stencil · Linotype Automat
haron
ures · LT Dala · LT Down Town · LT Dropink · LT Felt
esttagsfont · LT Finerliner · LT Flamingo · LT Franosch · LT Freytag · LT Gaius · LT Inagur · LT I
chtwerk · LT Maenneken · LT Mailbox · LT Method · LT Notec · LT Offix · LT Party Time · LT Pi
ine · LT Projekt · LT Punkt · LT Puritas · LT Really · LT Rezident · LT Rory · LT Rough
owena · LT Russisch Brot · LT Sansara
cott · LT Seven · LT SinahSans
ketch · LT Smileface · LT Space Balls · LT Spacera · LT Startec

unburst · LT Truckz · LT Typo American
ffie · Ale · Balder · Escript LT · HaManga Irregular · LT Astrac · · LT Animalia
gogo · LT Aroma · LT Astrolo · LT Atlantis · LT Atomic · LT Authentic Sans ·
uthentic Serif · LT Authentic Small Serif · LT Authentic Stencil · Linotype Automat · LT Char
plex · LT Colibri · LT Creatures · LT Dala
own Town · LT Dropink · LT Feltpen · LT Festtagsfont · LT Finerliner · LT Flamingo · LT Franos
reytag
aius · LT Inagur · LT Kaliber
ichtwerk · LT Maenneken · LT Mailbox
ethod · LT Notec · LT Offix · LT Party Time · LT Pide Nashi
ine · LT Projekt · LT Punkt · LT Puritas · LT Really · LT Rezident · LT Rory · LT Rough
owena · LT Russisch Brot · LT Sansara
cott · LT Seven · LT SinahSans
ketch · LT Smileface · LT Space Balls · LT Spacera · LT Startec · LT Sunburst · LT Truckz
ypo American
ffie · Ale · Balder · Escript LT · HaManga Irregular · LT Astrac · · LT Animalia
roma · LT Astrolo · LT Atlantis · LT Atomic · LT Authentic Sans ·
uthentic Serif · LT Authentic Small Serif · LT Authentic Stencil · Linotype Automat · LT Char
own Town · LT Dropink · LT Feltpen · LT Festtagsfont · LT Finerliner · LT Flamingo · LT Franos
aius · LT Inagur · LT Kaliber · LT Lichtwerk · LT Maenneken · LT Mailbox · LT Method · LT No
ine · LT Projekt · LT Punkt · LT Puritas · LT Really · LT Rezident · LT Rory · LT Rough
owena · LT Russisch Brot · LT Sansara · LT Grafie Type · Balder · Escript LT ·
Authentic Sans ·
uthentic Serif · LT Authentic Small Serif · LT Authentic Stencil · Linotype Automat · LT Char
own Town · LT Dropink · LT Feltpen · LT Festtagsfont · LT Finerliner · LT Flamingo · LT Franos
aius · LT Inagur · LT Lichtwerk · LT Maenneken · LT Mailbox · LT Method · LT No

Type

TOP TAKE Ty



Lino tYPE Library

Linotype Library GmbH
A division of the
Heidelberg Group

Du-Pont-Straße 1
61352 Bad Homburg
Germany

Phone +49 (0) 6172 484 418
Fax +49 (0) 6172 484 429

info@linotype.com
www.linotype.com

HEIDELBERG

TTT-BL410DEF1_0MPO